



NESPRESSO COFFEE CUP SLEEVE



NESPRESSO COFFEE CUP SLEEVE

Make a hot coffee cup sleeve to keep your hands cool!

MATERIALS

- Nespresso Capsule Box, two
- Printed coffee sleeve template, preferably on cardstock or similar

TOOLS

- Scissors or hobby knife
- Glue
- Clear tape



START!

STEP 1 Cut out printed coffee sleeve templates 1 and 2.



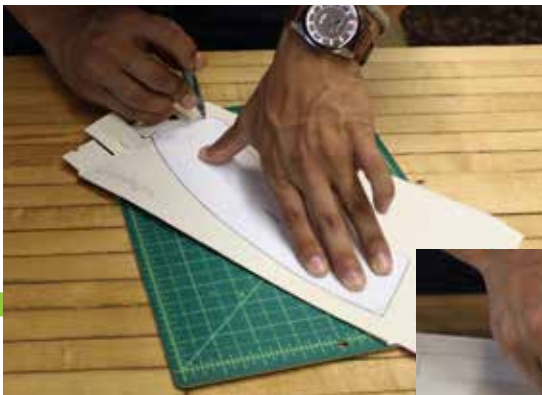
STEP 2

Carefully open up the capsule box and flatten out.



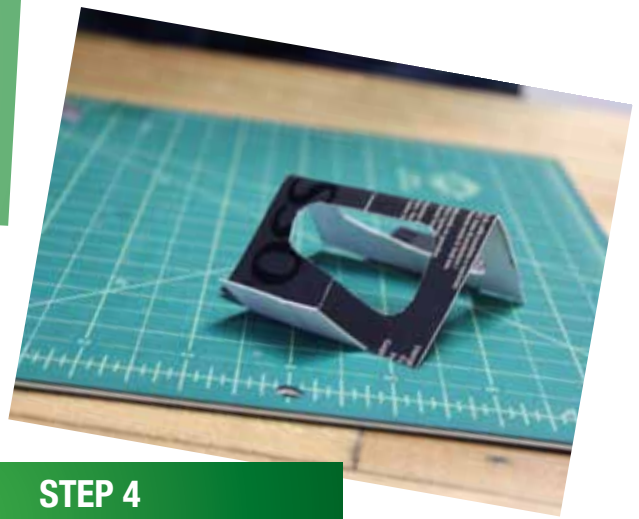
STEP 3

Use templates to trace and cut out identical shapes on the capsule box. You may need two boxes to get both templates to fit.



DESIGN TIP:

Make sure to cut out the red areas, they will be used to form your handles!



STEP 4

Fold and crease the lines as marked on both templates.



STEP 5

Apply glue to the gray areas as marked on the Template 1.



STEP 6

Carefully align letter A to B and hold firmly until glue has set.



STEP 8

Slide both flaps through the two slits from your first piece, and hold firmly until glue has completely set.



STEP 7

Apply glue to both flaps as marked on Template 2.



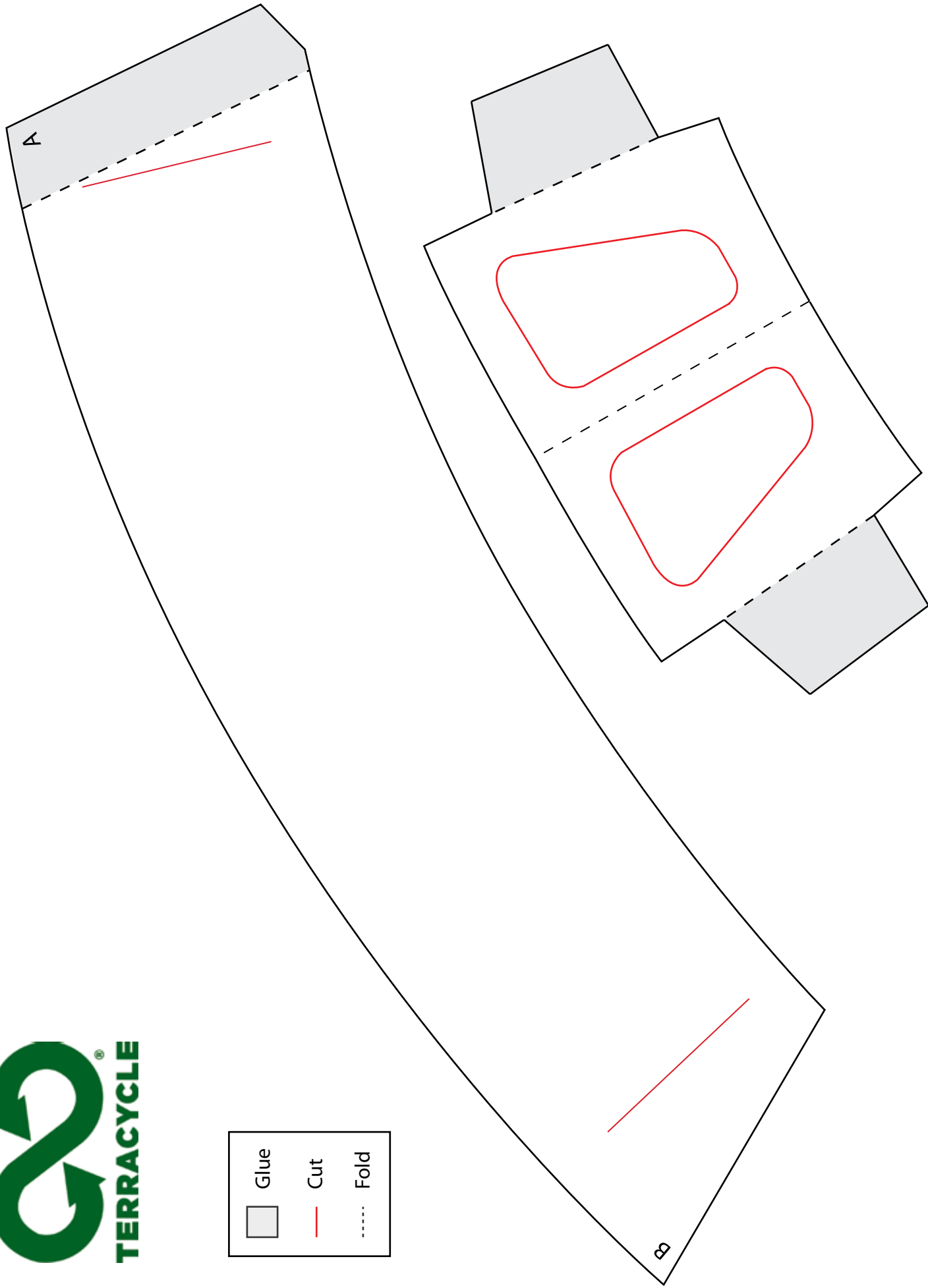
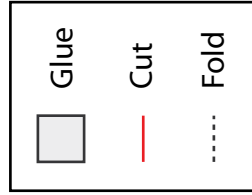
STEP 9

Enjoy your new coffee cup sleeve!

Disclaimer: Always keep a firm grasp on your coffee cup; you don't want to spill hot coffee on you!

Sign up for the TerraCycle Brigades at www.terracycle.com

TerraCycle®, the TerraCycle Logo® and Brigade® are all property of TerraCycle, Inc. used under license. ©2013





**STAY COOL WITH YOUR HOT COFFEE SLEEVE!
FOR MORE PROJECTS, CHECK OUT WWW.TERRACYCLE.COM!**