



TERRACYCLE®

TOOTHPASTE TUBE GIFT BOX



TOOTHPASTE TUBE GIFT BOX

Think outside the box and upcycle it into a gift box!

MATERIALS

- Toothpaste tube box

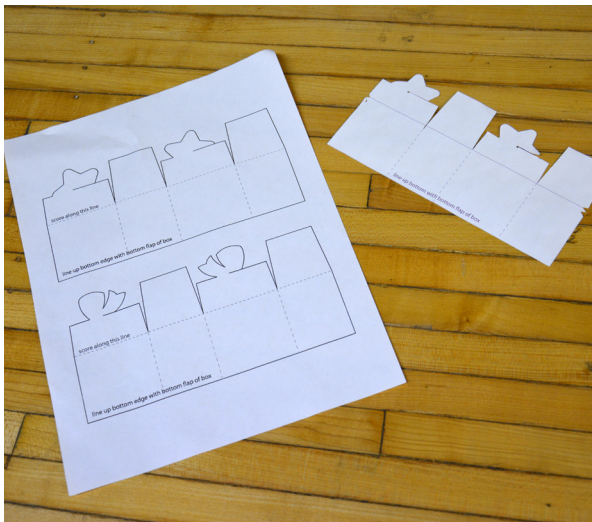
TOOLS

- Pen or pencil
- Scissors
- Tape
- Butter knife or other
- Scoring tool
- Ruler
- Printer and template
- Markers for decorating



START!

STEP 1 Cut open one edge of your toothpaste tube box and flatten it out.



STEP 2

Print and cut out the template from the last page of this PDF.

Place your template on top of the plain-colored side of the toothpaste box. Depending where you cut your box, your template can be flipped over for proper alignment. Make sure that the bottom of your template lines up with the bottom flap of the box. Trace around the edge of the top edge of the template. Leave the bottom flap intact.



STEP 3

DESIGN TIP:

Create an upcycled gift to go inside this eco-friendly box!



STEP 5

Fold your box and tape along the open edge. Tuck in the bottom flap. Then, carefully close the top and connect along the slits cut into the star or bow shape.



STEP 4

Cut along the traced lines. Then, line up your ruler along the scoring line and score with your butter knife to create a clean fold.

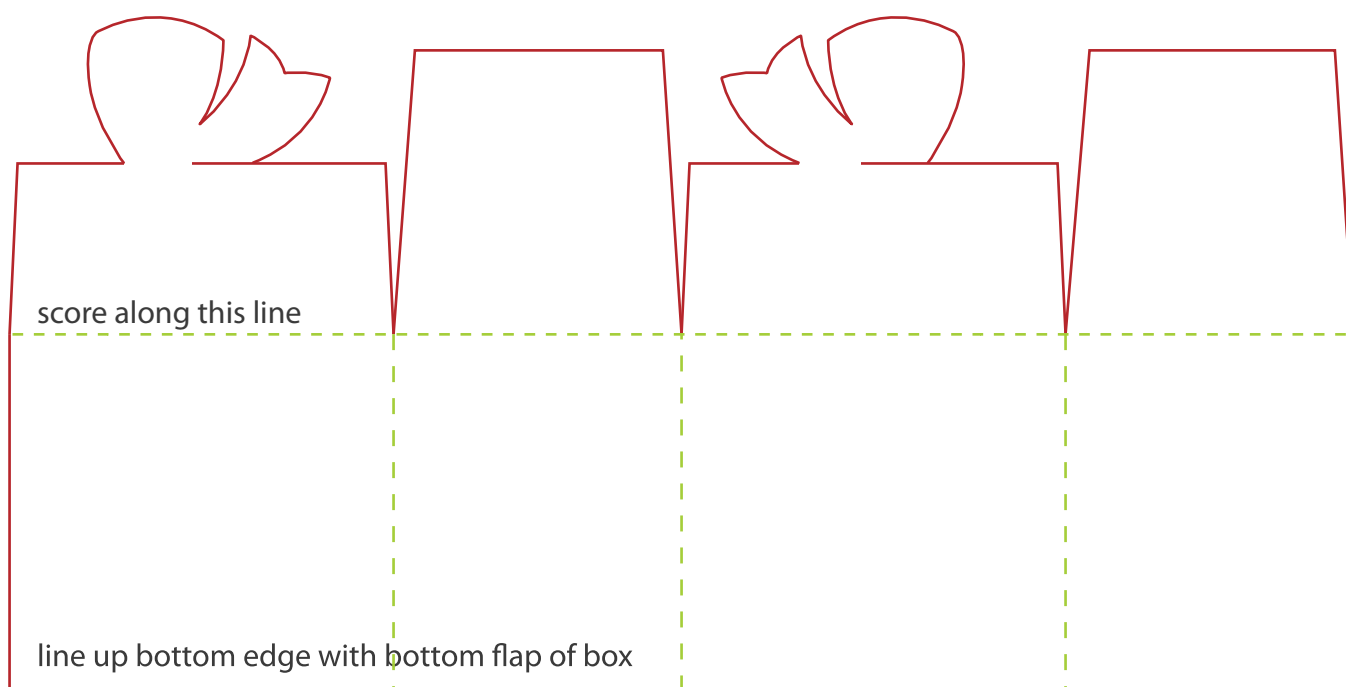
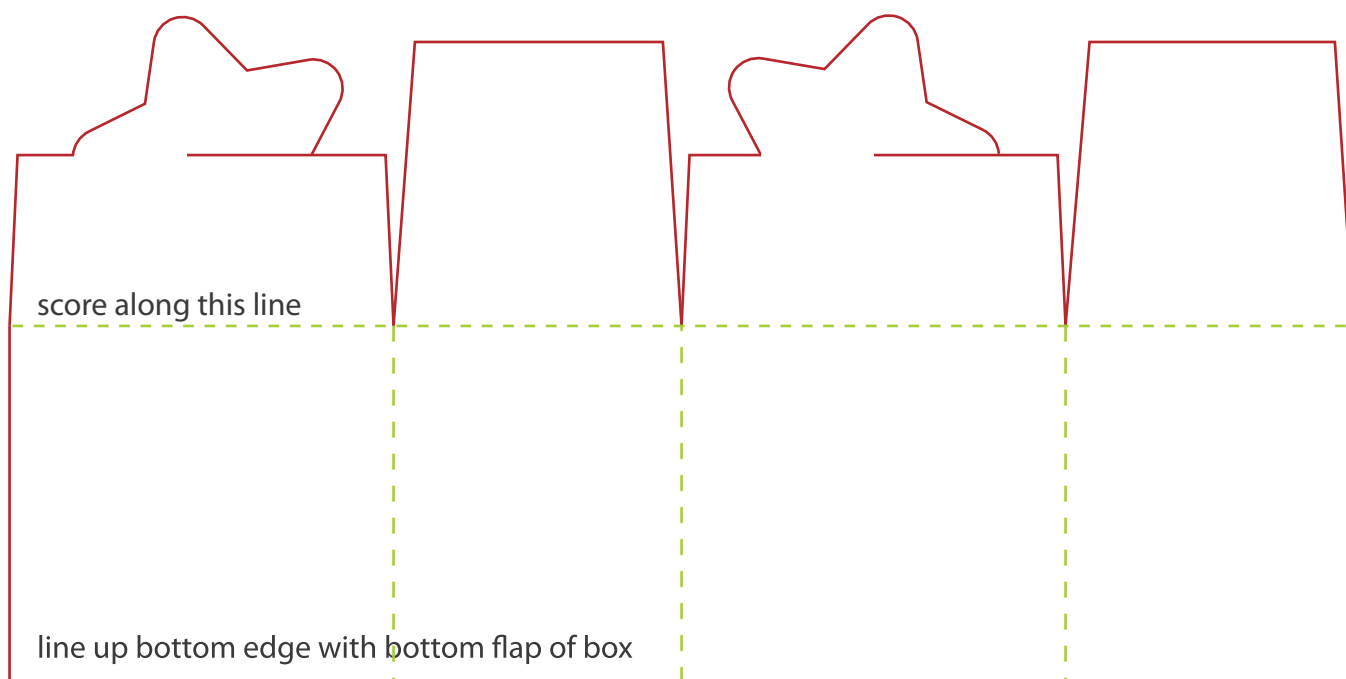


STEP 6

You can decorate your box with markers. Then add a fun gift inside and close up your new, minty box!

Sign up for the TerraCycle Brigades at www.terracycle.com

TerraCycle®, the TerraCycle Logo® and Brigade® are all property of TerraCycle, Inc. used under license. ©2013





TOOTHPASTE WASTE CREATES GREAT GIFT GIVING GEAR!